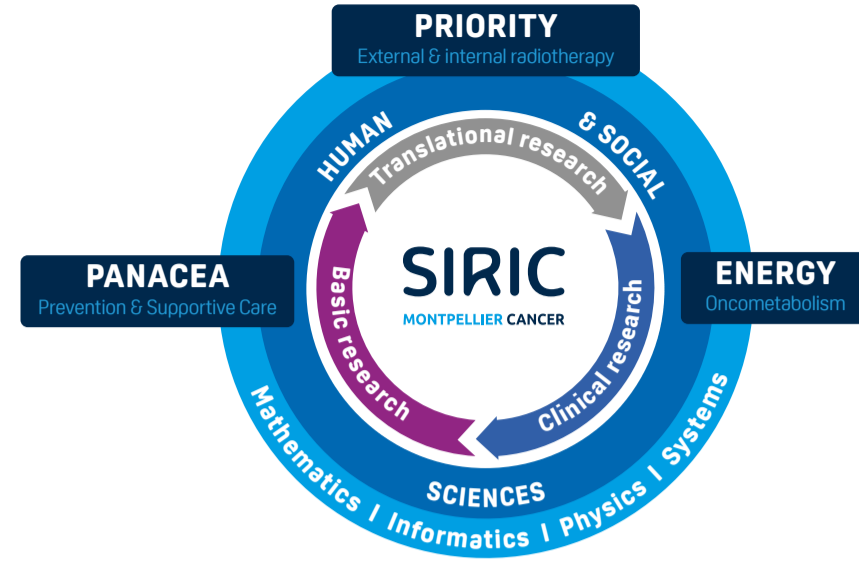


# 3 INTEGRATED RESEARCH PROGRAMMES

TO CHANGE THE PATIENT'S CARE PATHWAY BY A MULTILEVEL APPROACH



**1 PRIORITY**  
*P*redictive and *I*ntegrated *O*mics *R*adiobiology and *I*maging for *T*ailored radiotherapy

Leverage a unique cluster of excellence in radiotherapy to provide game-changing management of targeted irradiation treatments

PRIORITY aims to optimise internal and external radiotherapy treatments using a multimodal approach integrating tumour biology, radiobiology, dosimetry and AI-driven next-generation imaging.

**Coordinators:**

**Dr S Nougaret**  
MD, PhD, Radiologist,  
Department of Radiology  
(ICM)

**Dr JP Pouget**

PhD, Head of the "Head of the "Radiobiology for targeted and personalized Radiotherapy" group at IRCM

**2 PANACEA**  
*P*reventive *A*nd *s*upportive *C*are interventions to *re*du*C*E at-risk behaviours *A*nd cancer morbidity

Capitalize on strong expertise in HSS research to demonstrate efficacy of prevention and early supportive care

PANACEA draws on a unique combination of expertise in psychosocial and behavioural sciences, public health, supportive care and cancer biology to develop interventional research aimed at reducing cancer incidence and improving cancer patient outcomes.

**Coordinators:**

**Pr F Cousson-Gelie**  
PhD, Professor of Health Psychology, Head of Epidaure Prevention Centre (ICM) and Co-director of Epsilon laboratory (University Paul-Valery Montpellier 3)

**Dr P Senesse**

MD, PhD, GI Oncologist, Expert in Clinical Nutrition, Head of Supportive Care Department (ICM)

**3 ENERGY**  
*D*eciph*E*ri*N*g tumour *m*etabolic *c*ross-talks for new *di*a*G*nostic and therapeutic *o*pportunit*Y*

Establish a highly competitive research network targeting oncometabolism as a source of new therapeutic strategies.

ENERGY relies on a consortium of medical and scientific leaders with international recognition in metabolism, epigenetics and data modeling aimed at developing innovative therapeutic strategies based on the improved understanding of the metabolic alterations of cancer cells.

**Coordinators:**

**Pr V Rigau**  
MD, PhD, Head of Pathology Department (CHU)

**Dr L Lecam**

PhD, Head of the "Molecular oncogenesis" group at IRCM

# CLINICIANS & RESEARCHERS

JOIN THEIR FORCES TO TACKLE CANCER



**OPTIMISE**  
CANCER RESEARCH  
COORDINATION



**DISCOVER**  
INNOVATIVE CANCER  
TREATMENTS



**BOOST**  
INTERNATIONAL  
COLLABORATIONS



**SUPPORT**  
TRAINING OF RESEARCHERS  
AND CLINICIANS



**PROMOTE**  
HEALTH  
DEMOCRACY



**INSTITUT DU CANCER DE MONTPELLIER**  
208, avenue des Apothicaires,  
34298 Montpellier Cedex 5, France  
Tel. : + 33 (0)4 67 61 31 61  
siric.montpellier@icm.unicancer.fr

Director : **David Azria**  
Scientific Director : **Nathalie Bonnefoy**  
General Manager : **Vanessa Guillaumon**  
Coordination Project Manager : **Karine Saget**  
Assistant : **Aurore Marquis**

[WWW.MONTPELLIER-CANCER.COM](http://WWW.MONTPELLIER-CANCER.COM)



A LEADING CANCER RESEARCH CLUSTER IN FRANCE



# SIRIC MONTPELLIER CANCER

## EXCELLENCE IN CANCER RESEARCH

Boosted by "MedVallée" cluster of excellence in global health, Montpellier is a leading European metropolis for health innovation. In keeping with its reputation in the field of medicine, the city of Montpellier has become a point of reference in oncology. As witness to its remarkable cancer research strengths, **Montpellier is one of the eight French National Cancer Institute-designated integrated cancer research sites (SIRIC).**

A veritable concentration of skills, SIRIC Montpellier Cancer brings together a critical mass of clinicians and researchers from Montpellier's university hospitals and public research organisations. Through the diverse approaches of its laboratories, the SIRIC consortium covers the whole range of research for which the ultimate goal is the improved understanding, prevention, detection and treatment of cancer.

THE NEW FACULTY  
OF MEDICINE  
OF MONTPELLIER

# SIRIC MONTPELLIER CANCER

TO TRANSFORM WORLD CLASS CANCER RESEARCH  
INTO COMPREHENSIVE CARE

The SIRIC Montpellier Cancer acts as a driving force for optimal interactions of a network of clinicians and researchers toward an integrated approach to cancer research.

The SIRIC Montpellier Cancer brings together 20 research groups and 25 clinical teams associated with two University Hospitals and the most important academic science organisations (CNRS, INSERM and Universities of Montpellier).



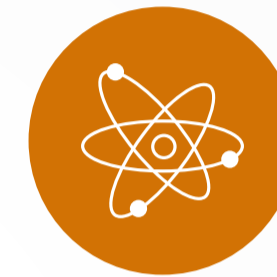
Clinical Oncology



Basic & Applied Biology



Human & Social Sciences



MIPS Research

← **INTEGRATION OF MEDICAL,  
SCIENTIFIC AND SOCIETAL  
RESEARCH ONCOLOGY** →



## EXCELLENCE IN CLINICAL AND TRANSLATIONAL RESEARCH

**ICM:** Montpellier Cancer Institute  
**CHU:** Montpellier University Hospital



## TOP NOTCH EXPERTISE IN CANCER BIOLOGY

**IGMM:** Institute of Molecular Genetics of Montpellier  
**IRCM:** Montpellier Cancer Research Institute  
**IGH:** Institute of Human Genetics  
**IGF:** Institute for Functional Genomics



## MULTIDISCIPLINARY EXPERTISE IN HUMAN AND SOCIAL SCIENCES

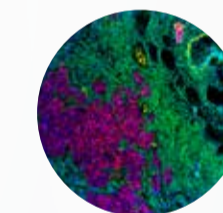
**Epsilon:** Laboratory of Health Psychology  
**Epidaure:** ICM Prevention & Health Education centre  
ICM Supportive Care Department  
**IDESP:** Desbrest Institute of Epidemiology & Public Health



## 2 MAJOR RESEARCH INSTITUTES IN MIPS

**LIRMM:** Laboratory of Computer Science, Robotics and Microelectronics of Montpellier  
**LMGC:** Laboratory of Mechanics and Civil Engineering

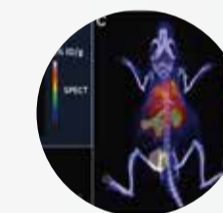
## CUTTING-EDGE CORE FACILITIES FOR CANCER RESEARCH



Spatial multi-omics



Preclinical radiotherapy



Preclinical Imaging



Antibody engineering



Liquid biopsy



Bioinformatics & Data modeling



Preclinical assays

